



# *TeamMate AM*

## Audit Management Solution

### Key Benefits

- Extensive integration with Microsoft Office allows auditors to work in a familiar environment that supports their working practices.
- Complimentary access to business contacts outside the audit department who are responsible for risk assessment input and issue updates makes such interactions seamless.
- Rich content libraries from AuditNet, as well as COBIT and other industry standard frameworks allow you to build your audit programs quickly and with confidence.
- Implementation, configuration, and training services provided by our staff of credentialed auditors bring to the table not only TeamMate knowledge, but also practical experience and understanding of the audit process.

### What is TeamMate AM?

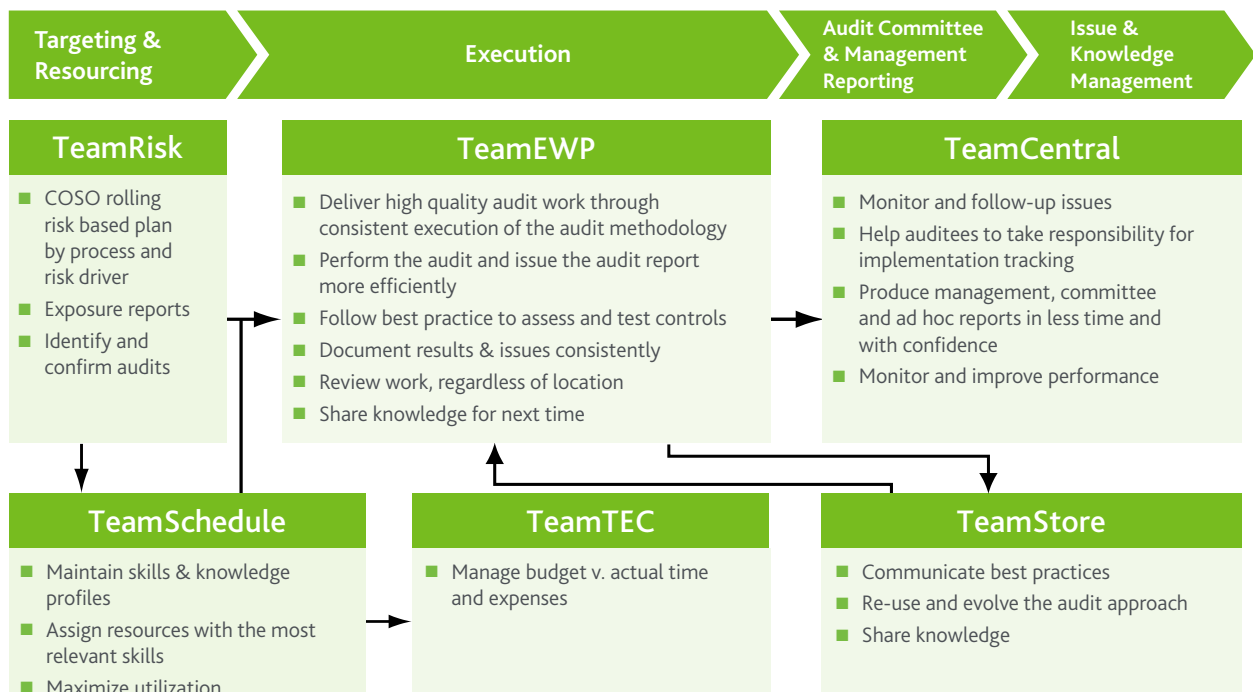
TeamMate AM is a comprehensive audit management system designed to help auditors and audit department leadership manage all aspects of the audit process. TeamMate allows your organization to identify risks and create assessment reports, schedule projects and allocate resources, capture time and expenses, track audits and issues, and create and manage audits via an advanced electronic working papers database. TeamMate AM is the powerful, award-winning audit management system that has revolutionized the audit process. TeamMate is the industry standard in audit management systems, and is used by 100,000 auditors from more than 2,500 organizations worldwide. Whether your audit department is large or small, TeamMate AM is scalable and can be configured to accommodate your needs. It increases the efficiency and productivity of your entire audit process including: risk assessment, scheduling, planning, execution, review, report generation, trend analysis, committee reporting, and storage.

### TeamEWP

#### Complete Audit Documentation System

- TeamEWP's unique database set-up and advanced replication features allow the entire team, regardless of location, to access the audit file simultaneously. Replication allows remote review without interrupting the ongoing audit work.
- TeamEWP includes TeamTalk, a secure communication and collaboration tool for use among individual audit teams and across your entire audit department.
- TeamEWP was designed for use across all business sectors for all types of audits.
- TeamEWP's security features include automatic encryption and compression of all audit data.
- TeamEWP has a user-friendly, Windows-based interface that integrates closely with Microsoft® Word and Excel, and provides simple navigation through any audit file.

### How to Improve your Audit Process



- TeamEWP's powerful reporting feature facilitates the automatic real-time drafting of issues, testing results and time summaries into preformatted Microsoft® Word documents. Templates can be created for various reporting requirements, in formats and styles that best suit your needs.

## TeamRisk

### Audit Universe Risk Assessment

- TeamRisk is an advanced risk assessment system that enables you to develop a truly risk-based audit plan, based on scoring methods and criteria that work best for you.
- User-defined fields make it easy to customize TeamRisk. You control risk weightings and calculations, to align with your own risk assessment methodology.
- Like all TeamMate components, TeamRisk is customizable so that terminology and risk factors used by your department can be easily incorporated.
- TeamRisk Web allows you to distribute your risk assessment to members of your audit team and/or to business management to complete. All results are then reviewed and imported into your current assessment.
- Risks and controls identified in TeamRisk are seamlessly carried forward into TeamEWP to facilitate testing and reporting.
- Roll forward key elements of your previous assessment as a head start to your new risk assessment.

## TeamSchedule

### Resource and Project Scheduling

- TeamSchedule provides users with the ability to schedule projects and

resources in such a way that there is a clear visual demonstration of personnel assignments and tracking of projects in an annual plan.

- TeamSchedule is designed to be flexible enough to work easily for small and large groups by allowing multiple schedulers, resource teams and state-of-the-art Gantt interfaces to display assignments.
- Easy-to-use Drag'n Drop features allow you to select several resources and projects and with a single drag motion add them to the schedule.
- Resource views allow you to see unscheduled time and with a simple right-click find projects that are under-assigned to boost resource utilization.



## TeamTEC

### Time and Expense Capture

- TeamTEC is fully integrated with TeamSchedule and can pre-populate audit assignments and non-working events such as vacation to simplify the time entry process.
- View the annual plan to determine completeness and drill down through reports to analyze time and expense variances.

The screenshot shows the TeamTEC Time Entry interface. At the top, it displays the period (1/1/2012 - 1/31/2012), due date (2/2/2012), start duration (175), and time charged (\$2.00). Below this, there are buttons for 'Save', 'Submit', 'Cancel', 'Add Project', 'Add Staff', and 'Add Advice'. The main area is a table with columns for 'Totals', 'Sun 1', 'Mon 2', 'Tue 3', 'Wed 4', 'Thu 5', and 'Fri 6'. The table lists various time entries with their durations and associated costs.

	Totals	Sun 1	Mon 2	Tue 3	Wed 4	Thu 5	Fri 6
Accounts Receivable Process Review   12-INT-12	24.00						
Accounts Payable Process Review   12-INT-11	26.00						
Benefits Process Review   12-CORP-09	8.00						
Human Resources Compliance Review   10-CORP-06	8.00						
New Year's Day	8.00						
Weekly Staff Meeting	4.00						
Training	4.00						

## TeamCentral Centralized Audit and Issue Tracking Database

- Customizable, user-defined dashboards provide views to all your key data with drill-down capabilities to underlying details.
- Allows easy web-based searching through your department's complete database of key audit data, e.g. issues, reports, plans, risks and controls.
- Facilitates issue follow-up, trend analysis, prior audit review and committee reporting.
- Accessible to key stakeholders, allowing management to focus on the overall objectives and management of audit results without the need to look at details.



TeamCentral - Dashboard view

The screenshot shows a table with columns for 'Issue ID', 'Issue Description', 'Recommendation', 'Status', 'Risk', 'Created Date', and 'Updated Date'. The rows list various audit issues with their corresponding recommendations and risk levels, color-coded by status.

TeamCentral - Recommendation aging

- Issue owners can be given complimentary access to provide progress updates.
- Automated emails propel the implementation tracking workflow, reducing time needed to monitor outstanding audit issues.
- Monitor the results of surveys sent out of TeamEWP for pre-audit scoping, post-audit assessment, or any other survey need.

### Contact information:

UNITED STATES  
The Towers at Westshore  
1410 N. Westshore Boulevard  
Suite 400  
Tampa, FL 33607  
United States  
1 888 830 5559

CANADA  
Suite 300, 90 Sheppard Ave. E.  
Toronto, Ontario M2N 6X1  
Canada  
1 800 461 5308, ext. 6853

EUROPE, MIDDLE EAST, AFRICA  
25 Canada Square  
41st Floor  
London, E14 5LQ  
United Kingdom  
+44 20 3197 6566

ASIA PACIFIC  
15/F, W Square  
312-324 Hennessey Road  
Wan Chai  
Hong Kong  
+ 852 2610 7080



Authorised Solution Partner -  
SAMA AUDIT SYSTEMS AND SOFTWARES PVT. LTD.,  
601, Janki Centre, 29, Shah Industrial Estate,  
Off Veera Desai Road, Andheri (W), Mumbai 400053,  
Maharashtra, India.  
+91-22-26743675 | info@samaaudit.com  
www.SamaAudit.com

Please visit [TeamMateSolutions.com/AM](http://TeamMateSolutions.com/AM) for more information.

Copyright © 2016 Wolters Kluwer Financial Services, Inc. All rights reserved. 10006